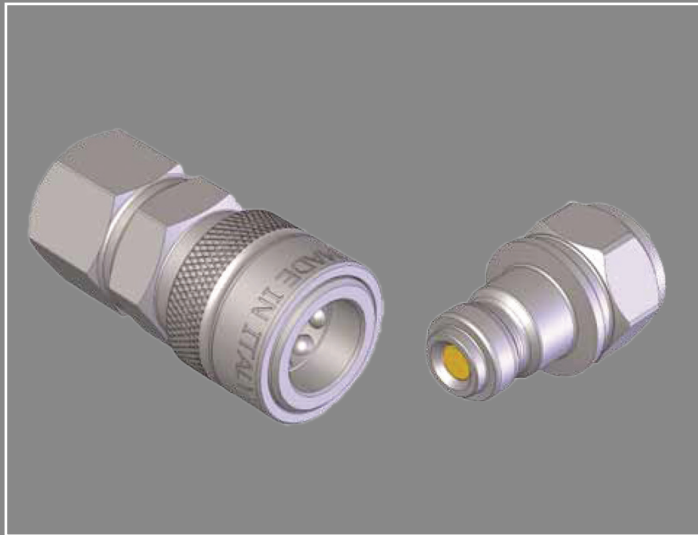
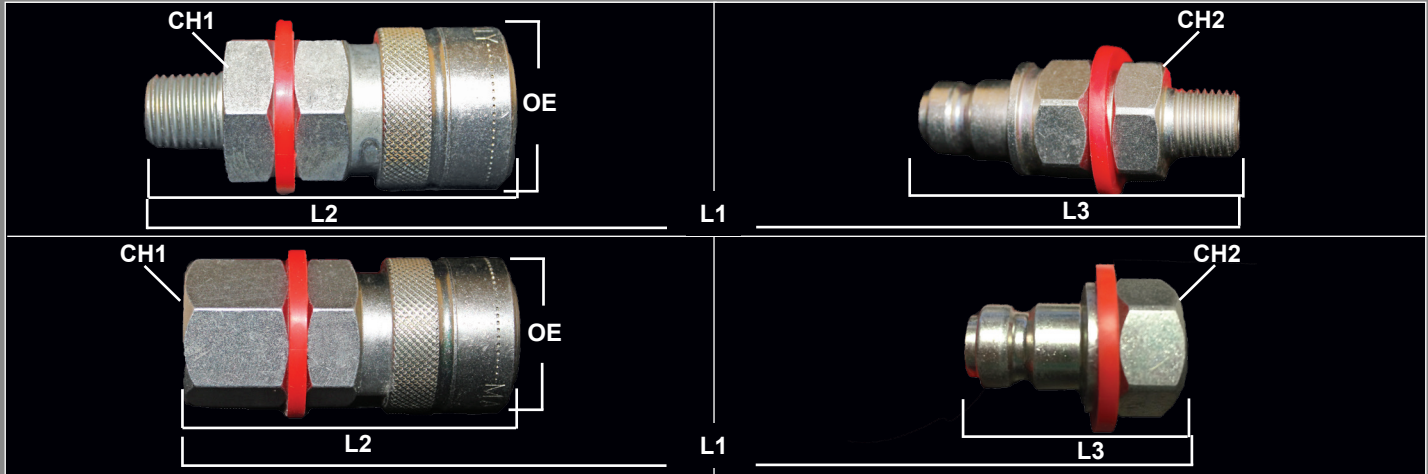


# 115 UHP SERIES QUICK COUPLINGS

Ultra High Pressure



## Features and Applications

- 15,000 PSI
- Flush Face (Non-Drip)
- Standard Cap and Plugs
- NPT Threads
- Tested with Helium @ low and high pressure
- Torque Equipment
- High Pressure Tools

## MATERIALS

Body: High resistance steel  
 Finishing: Zn-Fe (Cr111)  
 Seals: NBR  
 Threads: NPT

## DIMENSIONAL & PRESSURE RATING DATA

Body Size	CH1	CH2	OE	L1	L2	L3	Flow Rate (GPM)	Max Working (PSI)	End Type
1/4"	.944	.865	1.10	2.31	1.41	2.98	1.60	15,000 PSI	Female
1/4"	.944	.865	1.10	2.46	2.49	4.24	1.60	15,000PSI	Male

units: inches

## ORDERING INFORMATION

QUICK COUPLING PART NUMBERING SYSTEM:

**UHP115 - 04 - 04 - C - NPT**

