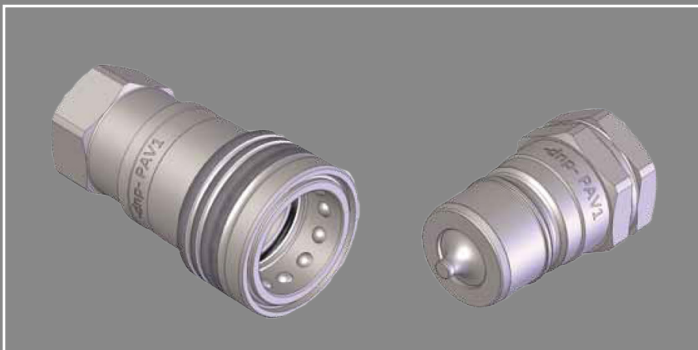
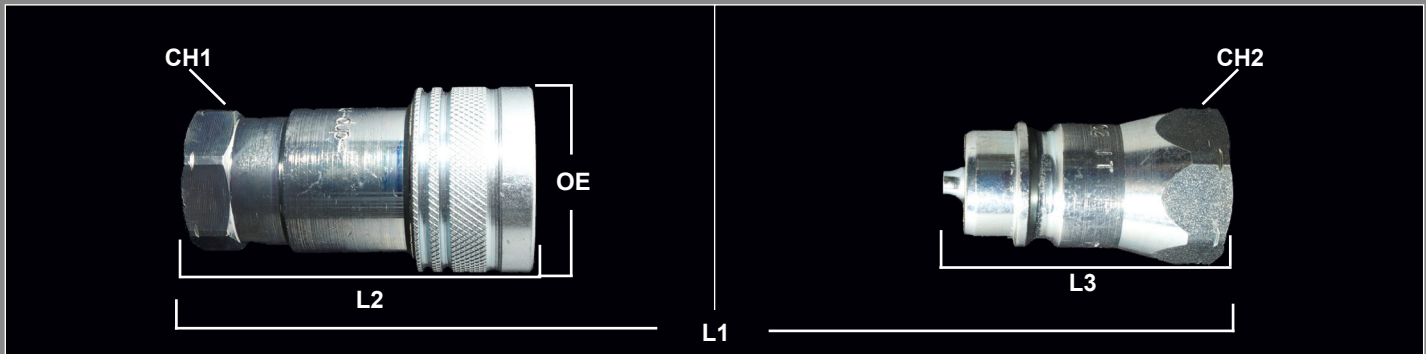


# ANV SERIES QUICK COUPLINGS (PAV1)

ISO 7241 - A - Poppet Style

Sizes: 1/4" thru 2"



## Features and Applications

- Radial Locking Balls
- Manual connect and disconnect
- Ideal for general purpose hydraulics
- Economical applications
- Fast connecting and disconnecting

## MATERIALS

Body: Carbon Steel  
 Finishing: ZN-Fe (CRIII) Plating  
 Seals: NBR standard seals  
 Threads: NPT, SAE, BSP

## MAJOR INTERCHANGES

Parker 6600      Faster AN  
 Tomco A5600    Aeroquip 5600  
 Dixon K          SnapTite 61  
 Stucchi BIR

## DIMENSIONAL & PRESSURE RATING DATA

Body Size	CH1	CH2	CH3	L1	L2	L3	Optimal Flow Rate (GPM)	Max Flow Rate (GPM)	Max Working (PSI)
04	.751	.751	1.026	2.759	1.931	1.380	3.2	6.34	5,075
06	.868	.868	1.184	3.346	2.38	1.673	6.5	12.15	5,075
08	1.063	1.063	1.496	3.778	2.756	1.890	12	23.78	3,675
12	1.341	1.341	1.770	4.888	3.326	2.244	28	58.12	3,675
16	1.617	1.617	2.047	5.160	3.897	2.578	50	68.68	3,675
20	1.917	1.917	2.757	5.905	4.610	2.952	77	125.00	2,900
24	2.36	2.35	3.29	6.62	5.42	3.84	100	200	2,750
32	2.96	2.96	3.92	7.80	6.25	4.57	200	265	2,350

units: inches

## Key Note:

- Color Safe System options available



## ORDERING INFORMATION

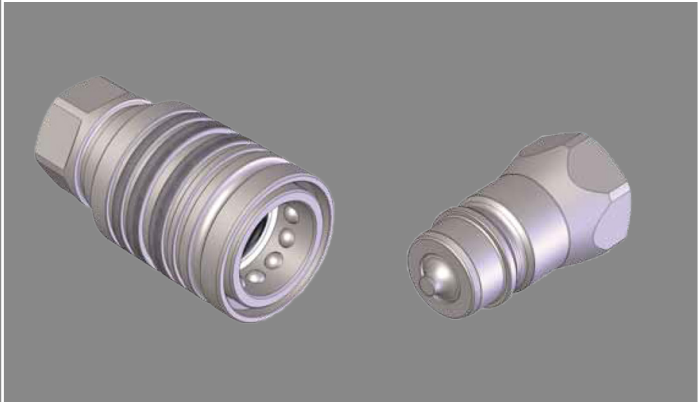
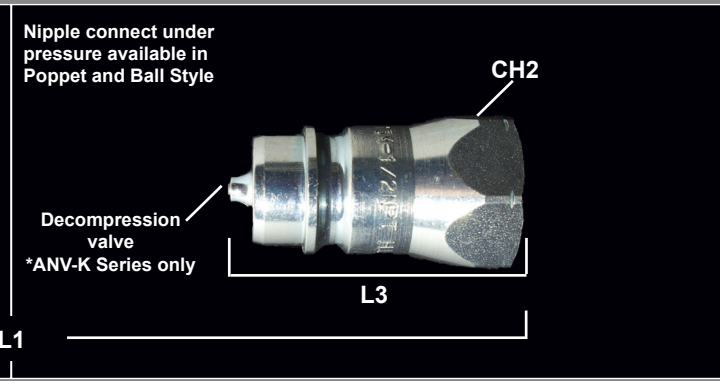
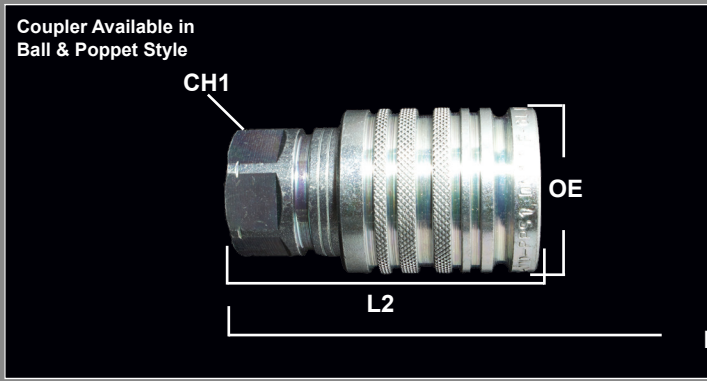
QUICK COUPLING PART NUMBERING SYSTEM:

**ANV - 12 - 12 - C - BSP**

ANV SERIES	Body Size		Body Size		Thread Size		Thread Size		Coupler / Nipple		Thread Type	
ISO 7241 - 1A	04	1/4"	16	1"	04	1/4"	16	1"	C	Coupler	NPT	NPT
	06	3/8"	20	1-1/4"	06	3/8"	20	1-1/4"	N	Nipple	SAE	O'Ring/UNF
	08	1/2"	24	1-1/2"	08	1/2"	22	22mm			MM	Metric
	12	3/4"	32	2"	12	3/4"	24	1-1/2"			BSP	British Parallel
							32	2"				

# PPS / PPV/ANV-K SERIES QUICK COUPLINGS

Push Pull  
 Sizes: 1/2"



### Features and Applications

- Ideal for mobile applications using hydraulic attachments
- PPS / PPV are designed to break away in case of accidental pulls
- One hand to connect and disconnect

\* ANV - K can be used with the PPV in cases where the implement has trapped pressures in the hydraulic lines

### MATERIALS

Body: Carbon Steel  
 Finishing: ZN-Fe (CRIII) Plating  
 Seals: NBR standard seals  
 Threads: NPT, BSP, & Metric  
 \* PPV interchanges with 1/2" NV Series

### MAJOR INTERCHANGES

Parker 4000	Faster 3CPU
Aeroquip F72	Dixon AG
SnapTite 61	Stucchi IRS
Safeway S40	

### DIMENSIONAL & PRESSURE RATING DATA

PPS & ANV-K (Ball Style)

Body Size	CH1	CH2	OE	L1	L2	L3	Optimal FlowRate (GPM)	Max Flow Rate (GPM)	Max Working (PSI)
08	1.063	1.063	1.496	3.78	2.756	1.890	11.89	14.53	2,490

### DIMENSIONAL & PRESSURE RATING DATA

PPV & ANV-K (Poppet Style)

Body Size	CH1	CH2	OE	L1	L2	L3	Optimal Flow Rate (GPM)	Max Flow Rate (GPM)	Max Working (PSI)
08	1.063	1.063	1.496	3.78	2.756	1.890	11.89	23.78	3,675

units: inches

## ORDERING INFORMATION

QUICK COUPLING PART NUMBERING SYSTEM:

**PPS - 08 - 08 - C - NPT**

PPS/PPV/ANV-K SERIES	
PPV	Poppet Push-Pull Coupler
PPS	Ball Push-Pull Coupler
ANV-K	Connect under pressure Poppet Style Nipple
NSK	Connect under pressure Ball Style Nipple

Body Size	
08	1/2"

Thread Size	
08	1/2"

Coupler / Nipple	
C	Coupler
N	Nipple

Thread Type	
NPT	NPT