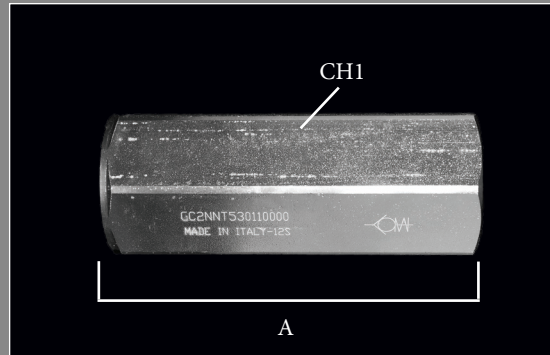


CV SERIES

Check Valve - Cracking Pressure: 7 PSI
 Carbon Steel & 316 Stainless Steel
 Sizes: 1/4" thru 2"



CV



Dimensional & Pressure Rating Data

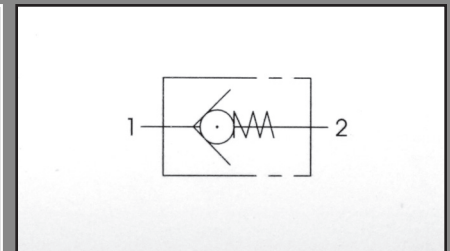
| Body Size | A | CH1 | Max Working Pressure (PSI) | Cracking Pressure |
|-----------|------|------|----------------------------|-------------------|
| 04 | 2.44 | .75 | 7,250 | 7 |
| 06 | 2.76 | .95 | 7,250 | 7 |
| 08 | 3.15 | 1.18 | 7,250 | 7 |
| 12 | 3.86 | 1.42 | 5,800 | 7 |
| 16 | 4.33 | 1.60 | 5,075 | 7 |
| 20 | 5.12 | 2.17 | 5,075 | 7 |
| 24 | 5.43 | 2.56 | 5,075 | 7 |
| 32 | 6.30 | 3.15 | 3,625 | 7 |

units: inches

Features and Benefits

- Carbon steel construction with Silver Trivalent plating
- 316 steel available
- Threads Available: NPT, SAE, and BSP
- Cracking Pressure 7 PSI or 65 PSI

* Different cracking pressures available upon request



ORDERING INFORMATION

Low Pressure Inline Ball Valve Part Numbering System:

