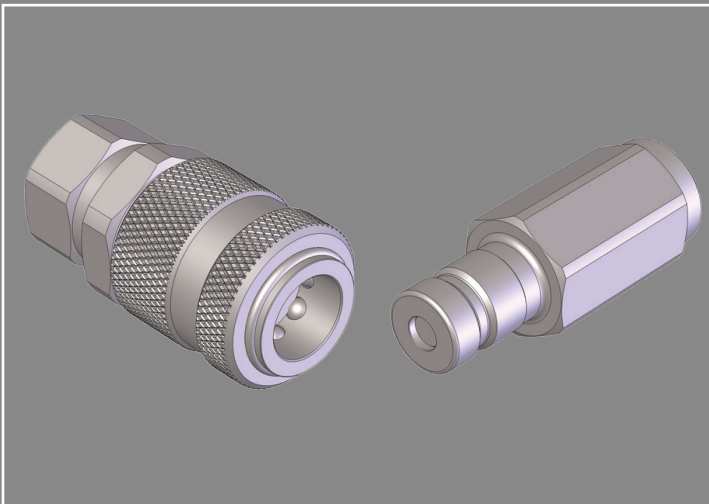
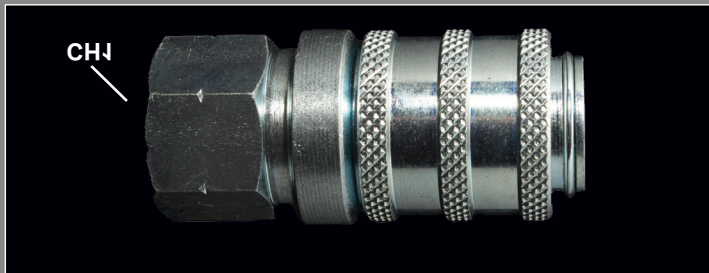


# D - SERIES QUICK COUPLINGS

Flush Face - Diagnostic Test Port

Sizes: 1/4"



## Features and Applications

- Flat Face
- 6,000 PSI working pressure
- Diagnostic Testing
- Dynamic Testing
- Mobile Equipment
- Hydraulic Power Units

### MATERIALS

Body: Carbon Steel  
 Finishing: Trivalent Chrome Plating  
 Seals: NBR standard seals  
 Threads: NPT & SAE

### MAJOR INTERCHANGES

Parker PD Aeroquip FD60  
 Faster DF Tomco DK  
 Dixon PD

## DIMENSIONAL & PRESSURE RATING DATA

Body Size	HEX	CH1	CH2	OE	L2	L3	Optimal Flow Rate (GPM)	Max Working (PSI)
04	.81	.74	.74	.94	.94	1.90	1	6,000

units: inches

## ORDERING INFORMATION

QUICK COUPLING PART NUMBERING SYSTEM:

