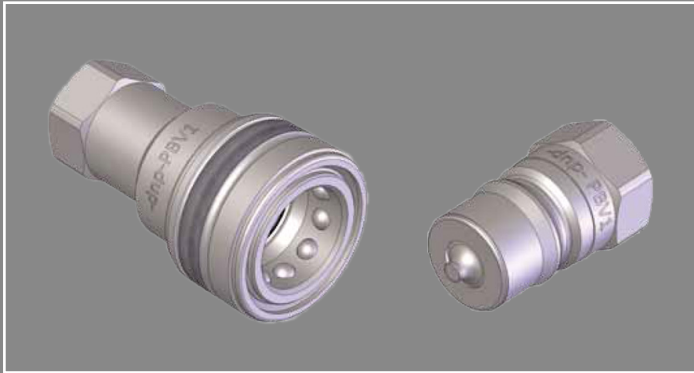
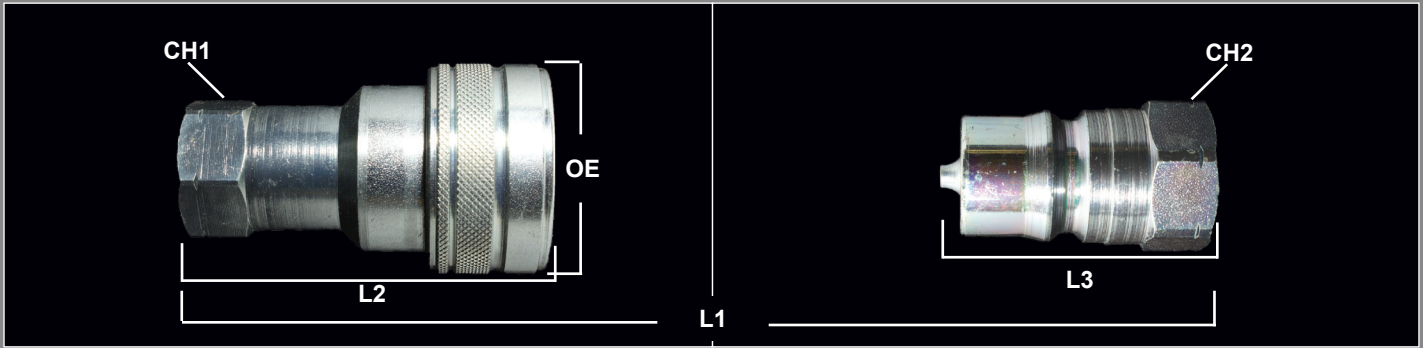


# HNV SERIES QUICK COUPLINGS (PBV1)

ISO 7241 - B - Industrial Poppet Type

Sizes: 1/8" thru 1"



## Features and Applications

- Industrial interchange
- Radial locking balls
- Manual connect and disconnect
- Industrial Markets
- Fast connecting and disconnecting

### MATERIALS

Body: Carbon Steel  
 Finishing: ZN-Fe (CRIII) Plating  
 Seals: NBR standard seals  
 Threads: NPT

### MAJOR INTERCHANGES

Parker 60      Faster HN  
 Tomco THK    Aeroquip FD45  
 Dixon H        SnapTite 72  
 Stucchi IRB    Safeway S10

## DIMENSIONAL & PRESSURE RATING DATA

Body Size	CH1	CH2	OE	L1	L2	L3	Optimal Flow Rate (GPM)	Max Flow Rate (GPM)	Max Working (PSI)
02	.67	.67	.91	2.52	2.00	1.26	.80	2.38	7,250
04	.751	.751	1.026	2.759	1.931	1.380	3.2	6.34	3,626
06	.868	.868	1.184	3.346	2.38	1.673	6.5	12.15	3,626
08	1.063	1.063	1.496	3.778	2.756	1.890	12	23.78	3,675
12	1.341	1.341	1.770	4.888	3.326	2.244	28	58.12	3,675
16	1.617	1.617	2.047	5.160	3.897	2.578	50	68.68	3,675

**\* Larger Bore Sizes Available**

units: inches

## ORDERING INFORMATION

QUICK COUPLING PART NUMBERING SYSTEM:

**HNV - 12 - 12 - C - NPT**

HNV SERIES	Body Size		Body Size		Thread Size		Thread Size		Coupler / Nipple		Thread Type	
	02	1/8"	08	1/2"	02	1/8"	08	1/2"	C	Coupler	NPT	NPT
ISO 7241 - B	04	1/4"	12	3/4"	04	1/4"	12	3/4"	N	Nipple	BSP	BSP
	06	3/8"	16	1"	06	3/8"	16	1"				