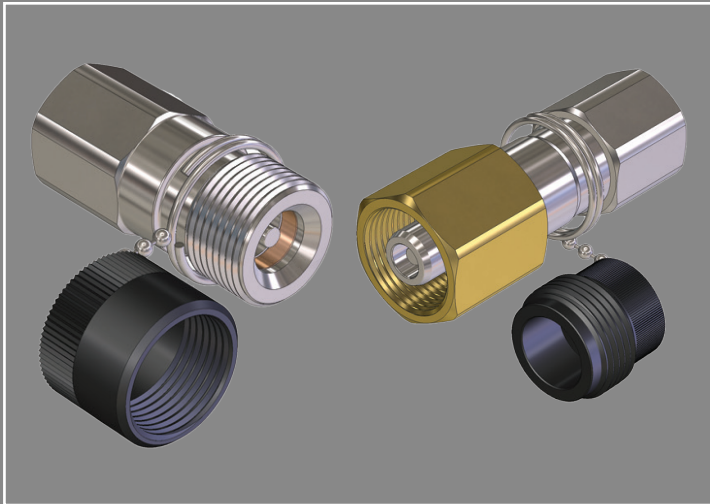
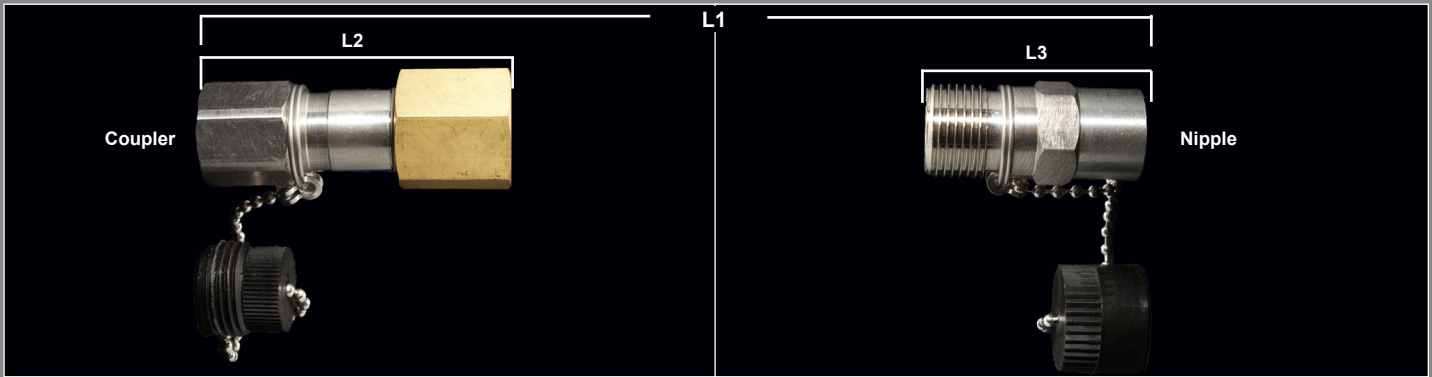


HPI SERIES QUICK COUPLINGS

High Pressure - Screw Type

Size: 1/4"



Features and Applications

- Screw to connect
- 10,000 PSI
- Instrumentation
- Torque Gauges
- Dual Scale Gauges
- Hydraulics

MATERIALS

Body: 316 Stainless Steel body with brass hex sleeve

Accessories: Plastic cap and dust plug included

MAJOR INTERCHANGES

Parker 1141

DIMENSIONAL & PRESSURE RATING DATA

Body Size	CH1	CH2	L1	L2	L3	Optimal Flow Rate (GPM) (Connected)	Max Working (PSI)
04	.98	.87	4.68	2.70	1.98	3	10,000

units: inches

ORDERING INFORMATION

QUICK COUPLING PART NUMBERING SYSTEM:

