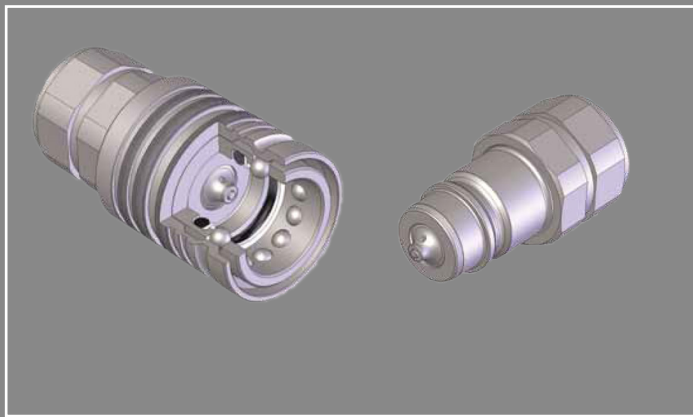
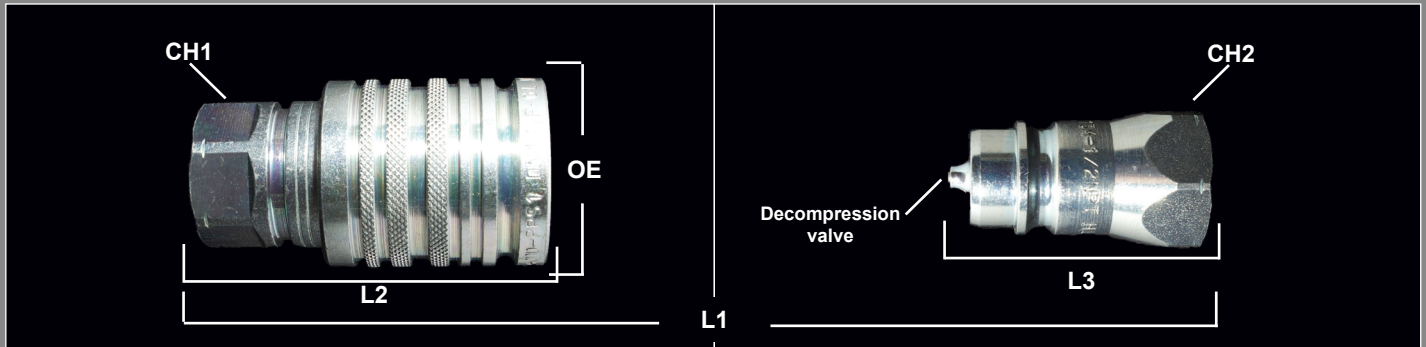


# PKK3 SERIES QUICK COUPLINGS

ISO 17241 - A - Push Pull - Panel Mount Agricultural Style

Female Coupling

Sizes: 1/2"



## Features and Applications

- Connectable under pressure
- Push pull design
- One hand operation to connect
- Break away coupling when coupling sleeve is fixed
- Decompression valves on coupling and nipple
- Interchangeable with 1/2" ISO A

### MATERIALS

Body: Steel  
 Finishing: Zn-Fe (CRIII)  
 Seals: NBR  
 Threads: BSP,NPT,SAE,Metric  
 \*other threads available upon request

### MAJOR INTERCHANGES

Parker 4200  
 Faster CPV  
 Aeroquip FP72

## DIMENSIONAL & PRESSURE RATING DATA

Body Size	CH1	CH2	OE	L1	L2	L3	Optimal Flow Rate (GPM)	Max Flow Rate (GPM)	Max Working (PSI)
08	1.182	1.182	1.496	5.39	2.953	2.441	11.89	23.78	3625

units: inches

## ORDERING INFORMATION

QUICK COUPLING PART NUMBERING SYSTEM:

