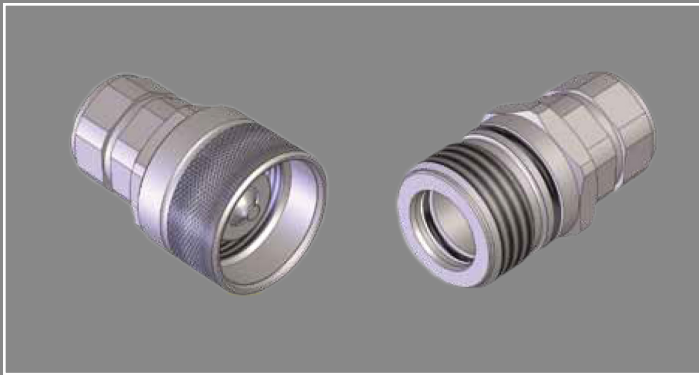
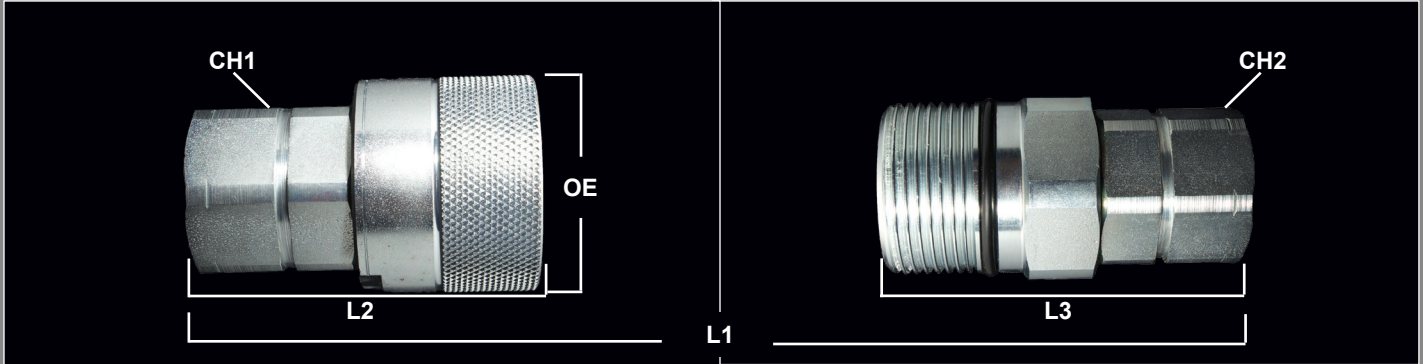


PVV3 SERIES QUICK COUPLINGS

Screw To Connect - Connect Under Pressure
 Sizes: 1/4" thru 1-1/4"



Features and Applications

- Widely used in German market
- PVV3 is ideal for systems with high impulses and systems experiencing trapped pressure in hydraulic lines
- Cranes, Hammers, Rock Crushers, Shears, Micro-tunneling, Mining & Pile Driving

MATERIALS

Body: Carbon Steel
 Finishing: ZN-Fe (CRIII) Plating
 Seals: NBR standard seals
 Threads: NPT, BSP, DIN

MAJOR INTERCHANGES

Faster CVV Voswinkel HS
 TCH Germany 65 Argus HDK

DIMENSIONAL & PRESSURE RATING DATA

Body Size	CH1	CH2	OE	L1	L2	L3	Optimal Flow Rate (GPM)	Max Flow Rate (GPM)	Max Working (PSI)
04	.75	.75	1.35	3.66	2.32	2.28	3.17	4.49	6,525
06	.87	.87	1.34	3.86	2.52	1.93	6.10	12.15	5,800
08	1.42	1.42	1.65	4.29	2.76	2.20	11.89	23.78	5,800
12	1.61	1.61	1.87	5.08	3.31	2.60	28.00	50.19	4,350
16	1.97	1.97	2.17	5.98	3.94	3.07	49.93	73.97	4,350
20	2.17	2.17	3.15	8.27	4.96	5.16	76.00	126.80	4,350

units: inches

ORDERING INFORMATION

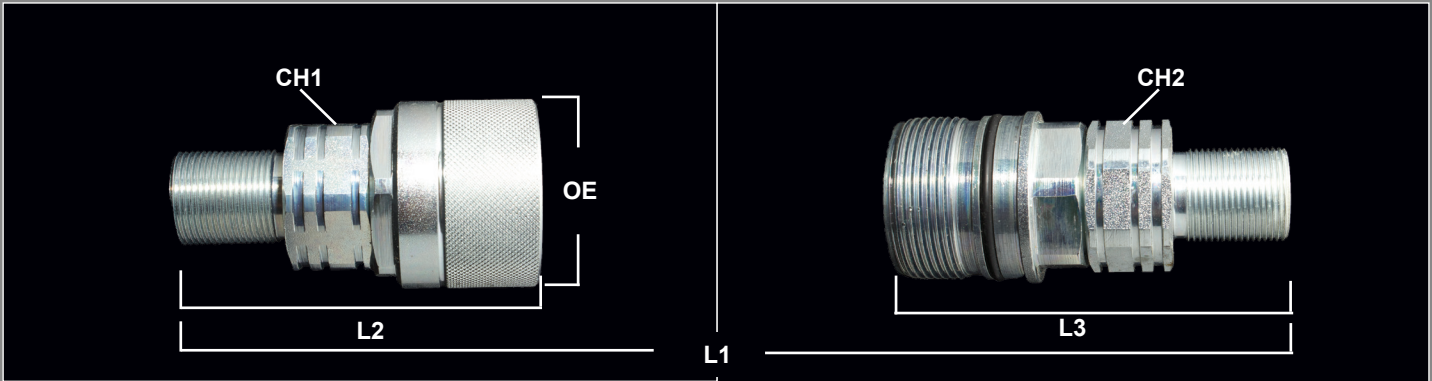
QUICK COUPLING PART NUMBERING SYSTEM:

PVV3 - 12 - 12 - C - NPT

PVV3 SERIES	Body Size		Body Size		Thread Size		Thread Size		Coupler / Nipple		Thread Type	
	04	1/4"	12	3/4"	04	1/4"	12	3/4"	C	Coupler	NPT	NPT
Connect Under Pressure Screw Together Couplings	06	3/8"	16	1"	06	3/8"	16	1"	N	Nipple	BSP	British Standard Parallel
	08	1/2"	20	1-1/4"	08	1/2"	20	1-1/4"			DIN	Metric

PVV3-BH SERIES QUICK COUPLINGS

Bulkhead - Screw To Connect - Connect Under Pressure
 Sizes: 1/4" thru 1-1/4"



Features and Applications

- Widely used in German Market
- PVV3 is ideal for systems with high impulse and systems experiencing trapped pressures in hydraulic lines
- Cranes, Hammers, Rock Crushers, Sheers, Micro-Tunneling, Mining & Pile Driving

MATERIALS

Body: Carbon Steel
 Finishing: ZN-Fe (CRIII) Plating
 Seals: NBR standard seals
 Threads: DIN Light / DIN Heavy

MAJOR INTERCHANGES

Faster CVV Voswinkel HS
 TCH Germany 65 Argus HDK

DIMENSIONAL & PRESSURE RATING DATA

Body Size	CH1	CH2	OE	L1	L2	L3	Optimal Flow Rate (GPM)	Max Flow Rate (GPM)	Max Working (PSI)
08	1.18	1.18	1.65	1.65	2.56	2.00	11.89	23.78	5,800
12	1.42	1.42	1.87	5.08	3.31	2.60	28.00	50.19	4,350
16	1.61	1.61	2.17	5.91	3.90	3.03	49.93	73.97	4,350
20	2.17	2.17	3.15	7.40	4.53	4.72	76.10	126.80	4,350

units: inches

ORDERING INFORMATION

QUICK COUPLING PART NUMBERING SYSTEM:

PVV3 - 08 - 12L - BH - C

