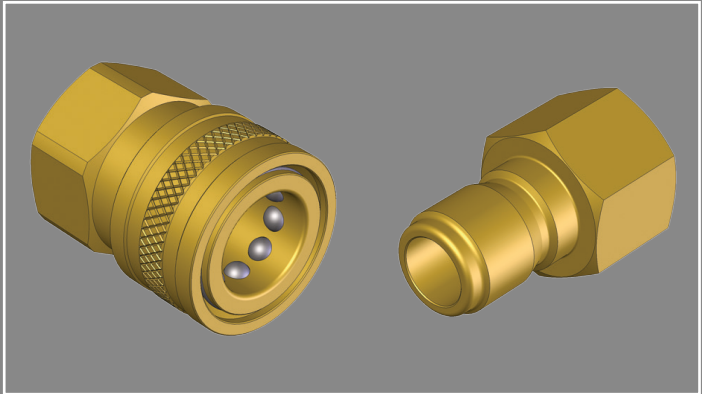
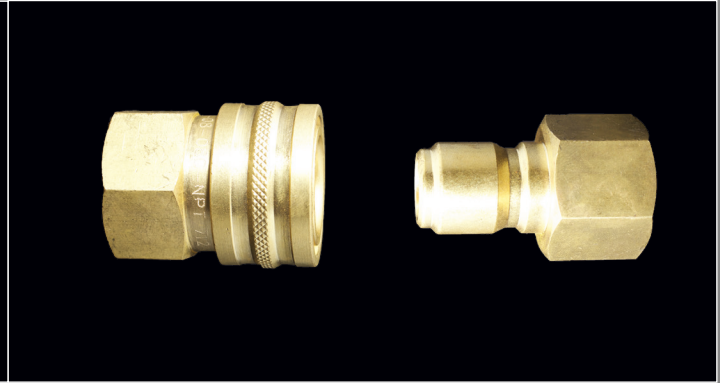
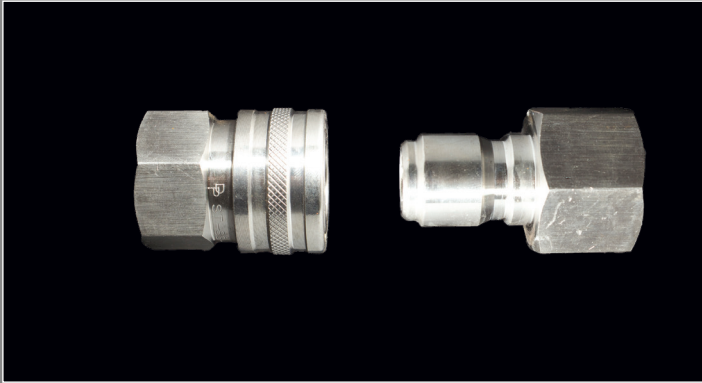


ST SERIES QUICK COUPLINGS

Straight Thru - Unvalved

Sizes: 1/4" thru 2"



Features and Applications

- Brass and Stainless offered
- Radial locking balls
- Commonly used in pressure washer applications
- Low and medium pressure hydraulic applications

MATERIALS

Body: Brass and 316 SS
 Seals: NBR standard seals
 Threads: NPT

DIMENSIONAL & PRESSURE RATING DATA

Body Size	Steel Working PSI	Brass Working PSI	304 SS Working PSI
04	5,500	5,200	6,700
06	3,500	3,500	5,500
08	2,700	2,200	3,000
12	2,700	1,700	3,000
16	2,000	1,200	2,000
20	2,000	1,700	2,000
24	2,000	1,800	2,000
32	2,000	1,800	2,000

units: inches

ORDERING INFORMATION

QUICK COUPLING PART NUMBERING SYSTEM:

ST - B - 06 - 06 - C - M

ST SERIES	Material		Body Size		Body Size		Thread Size		Thread Size		Coupler / Nipple		Thread Type	
	(blank)	Carbon Steel	04	1/4"	16	1"	04	1/4"	16	1"	C	Coupler	M	Male NPT
Straight Through Pressure Washer Coupling	B	Brass	06	3/8"	20	1-1/4"	06	3/8"	20	1-1/4"	N	Nipple	F	Female NPT
	SS316	316 Stainless Steel	08	1/2"	24	1-1/2"	08	1/2"	24	1-1/2"				
			12	3/4"	32	2"	12	3/4"	32	2"				