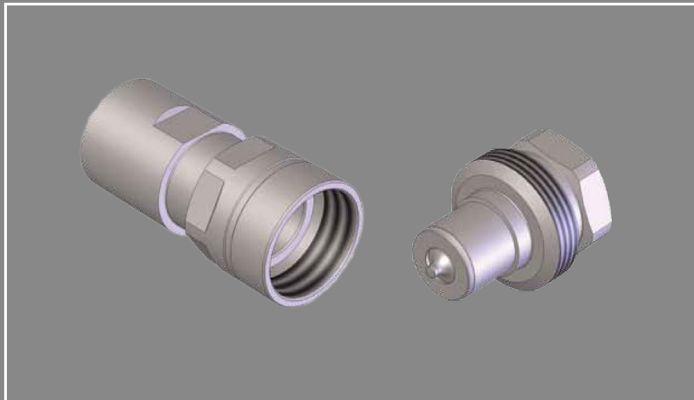
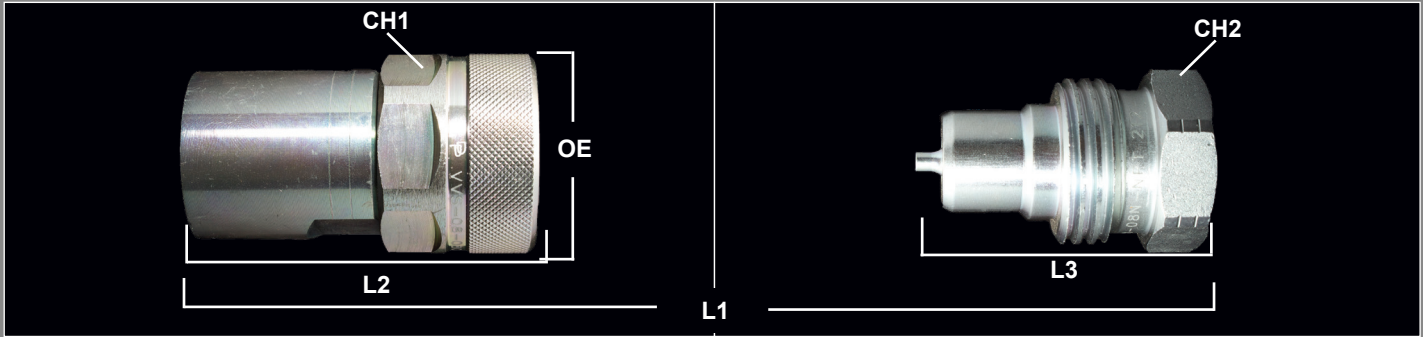


VVS SERIES QUICK COUPLINGS

High Pressure - Screw to Connect
 Sizes: 1/4" thru 1-1/4"



Features and Applications

- Low pressure drop
- Connect under pressure up to 3,000 PSI
- Thread to connect couplings eliminates brinelling
- Used in a wide range of industrial markets where connecting and disconnecting of hydraulic circuits is needed
- High pressure valved applications
- Wireline applications
- High impulse applications
- High vibration

MATERIALS

Body: High Resistant Steel
 Finishing: ZN-Fe (CRIII) Plating
 Seals: NBR standard seals
 Threads: NPT & BSPP

Interchange:
 Faster VVS

DIMENSIONAL & PRESSURE RATING DATA

Body Size	CH1	CH2	OE	L1	L2	L3	Optimal Flow Rate (GPM) (Connected)	Max Working (PSI)
04	1.06	.984	1.18	3.30	2.67	1.69	2.1	10,000
06	1.42	1.26	1.57	3.54	2.95	1.89	4.8	9,425
08	1.61	1.34	1.77	4.00	3.40	2.36	7.9	8,700
12	1.96	1.80	2.16	4.77	4.22	2.72	12.0	7,250
16	2.17	1.97	2.34	5.56	5.00	3.12	28.0	6,670
20	2.95	2.56	3.15	6.57	6.02	3.39	49.0	6,670
24	3.54	3.14	3.83	7.63	6.60	3.74	79.0	5,220

units: inches

ORDERING INFORMATION

QUICK COUPLING PART NUMBERING SYSTEM:

VVS - 12 - 12 - C - NPT

