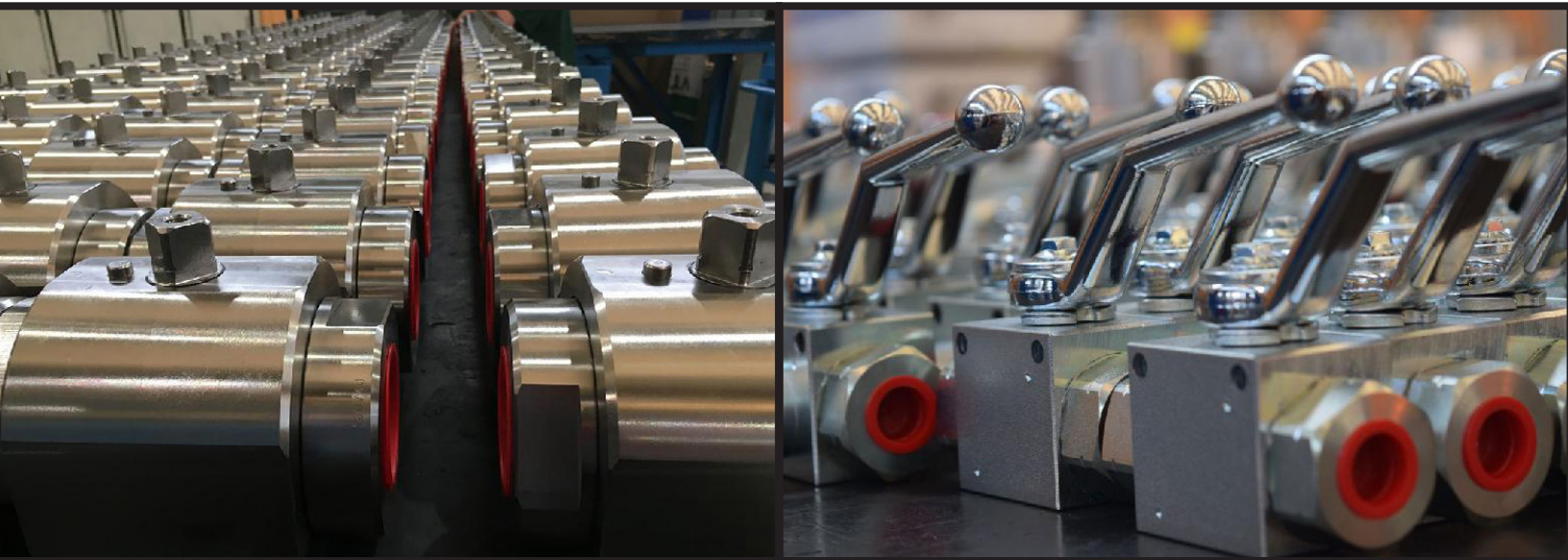


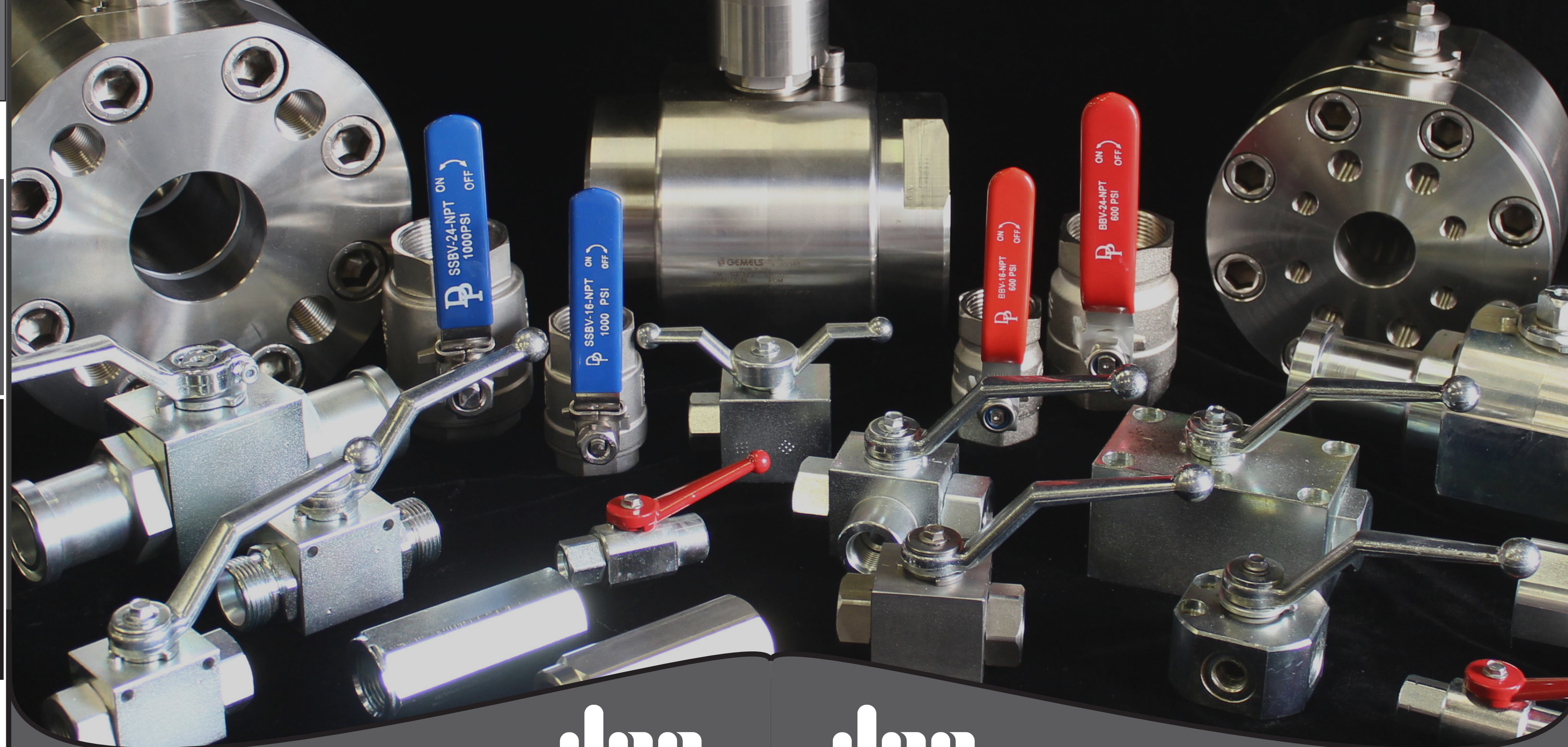
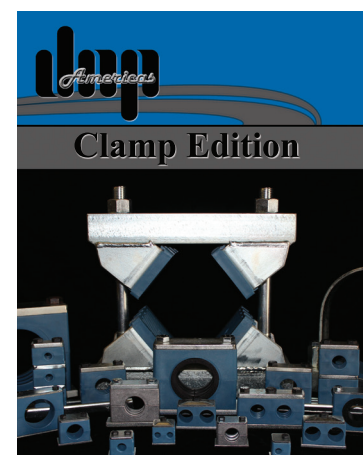
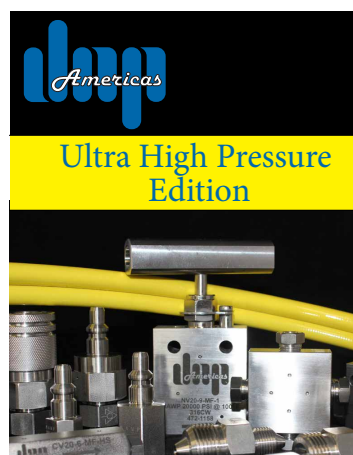
# DNP AMERICAS INNOVATION

## Product Certifications

- API 6D
- CE PED Mod. H
- CE PED Mod. A2
- EAC
- Firesafe Cert.
- SIL 3
- TA LUFT
- TUV IT 14 ATEX 074 AR
- Fugitive Emission
- Bureau Veritas - BVI/ATEX/ITA/17/017
- CRN



## Other DNP Products



DNP Americas  
860 FM 517  
Alvin, TX 77511  
Office: 281-388-0253  
Fax: 281-388-1902  
[www.dnpamericas.com](http://www.dnpamericas.com)

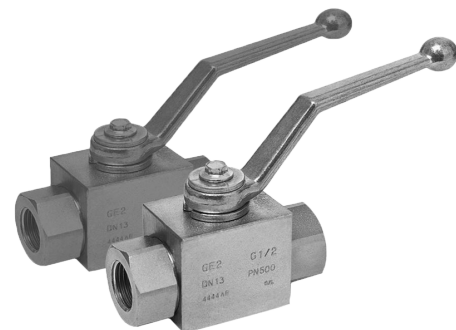


# Valve Brochure

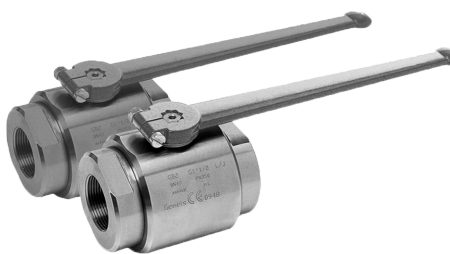


# High Pressure Ball Valves Americas Low Pressure Ball Valves Americas Check Valves

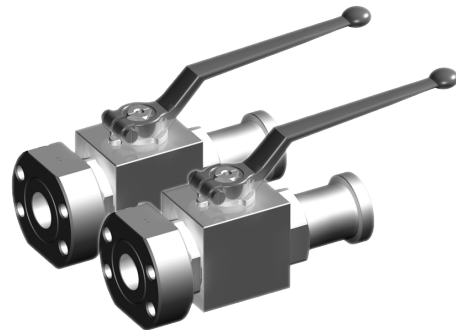
## BV2 Series



**BV2 Series**  
Material: Carbon Steel / SS316  
Thread Type Available: NPT, SAE, BSP  
Working Pressure: 5,000 & 7,250 PSI  
Standard Seals: Nitrile  
\*Available with Mounting Holes

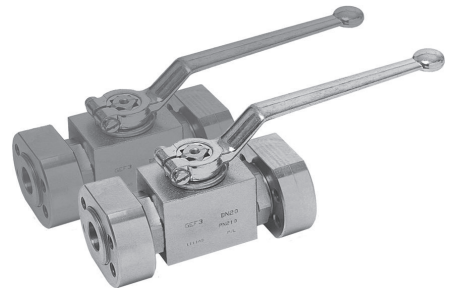


**BV2B Series**  
Material: Carbon Steel / SS316  
Thread Type Available: NPT, SAE, BSP  
Working Pressure: 5,000 - 6,000 PSI  
Standard Seals: Nitrile

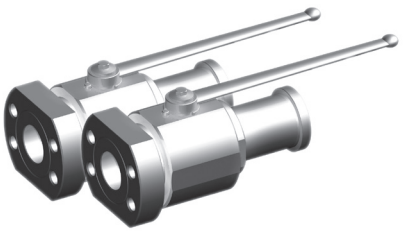


**BV2-FL/4B-61/62 Series**  
Material: Carbon Steel / SS316  
Thread Type Available: Combination  
Working Pressure: 3,000 & 6,000 PSI  
Standard Seals: Nitrile

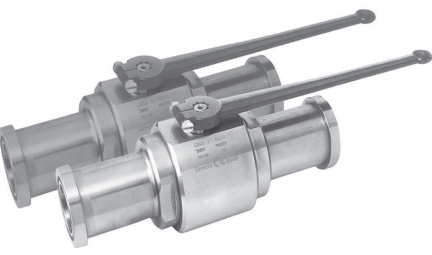
## BV2 Series Continued



**BV2-4B-FL61/62 Series**  
Material: Carbon Steel / SS316  
Thread Type Available: 4 Bolt Flange  
Working Pressure: 3,000 & 6,000 PSI  
Standard Seals: Nitrile

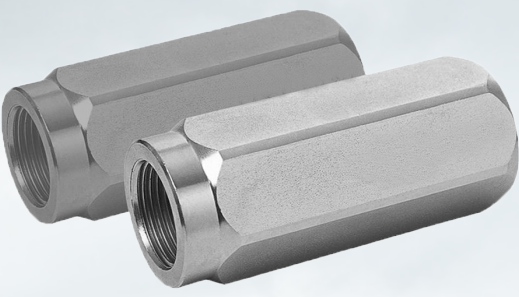


**BV2B-FL/4B-61/62 Series**  
Material: Carbon Steel / SS316  
Thread Type Available: Combination  
Working Pressure: 3,000 & 6,000 PSI  
Standard Seals: Nitrile



**BV2B-FL61/62 Series**  
Material: Carbon Steel / SS316  
Thread Type Available: Flange  
Working Pressure: 3,000 & 6,000 PSI  
Standard Seals: Nitrile

## Check Valves



**Check Valve Series**  
Material: Carbon Steel / SS316  
Thread Type Available: NPT  
Working Pressure: 5,000 - 7,250 PSI  
Standard Seals: NBR  
Cracking Pressure: 7 or 65 PSI

## Accessories

### Handles

- Butterfly Handles
- Bent Handles - available in stainless steel
- Cut Bent Handles - comes standard with our ball valves
- Cut Straight Handles - available in stainless steel
- Pipe Handles - available in stainless steel
- Straight Handles



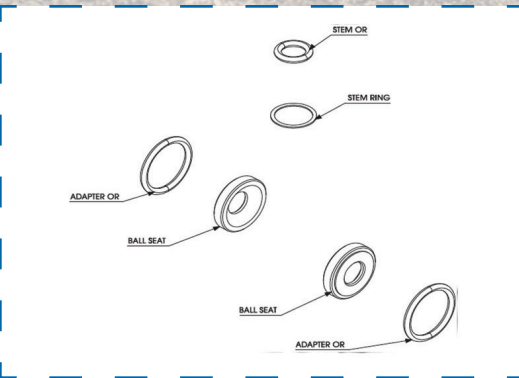
### Locking Kits

- LK-F - padlock not included
- LK for GR Series
- LK-T - padlock not included

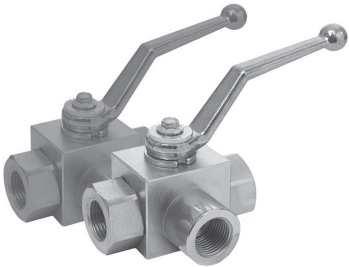


### Repair Kits - other O'Ring materials available upon request

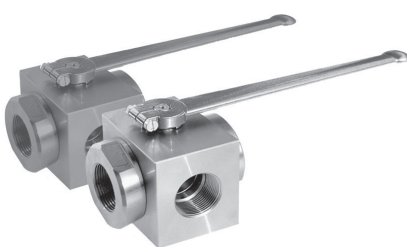
- BV2 & BV3 (Block Style) Standard Repair Kit
- Includes: 2 POM Ball Seats, 2 NBR Adapter O'Ring, 1 Stem O'Ring, 1 POM Stem Seal Ring
- BV2B (Round Body) Standard Repair Kit
- Includes: 2 POM Ball Seats, 2 NBR Adapter O'Ring, 1 Stem O'Ring, 1 POM Stem Seal Ring



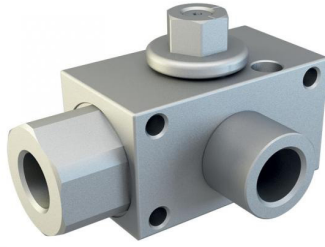
## BV3 Series



**BV3 Series**  
Material: Carbon Steel / SS316  
Thread Type Available: NPT, SAE, BSP  
Working Pressure: 5,000 - 7,250 PSI  
Standard Seals: Nitrile  
\*Available with Mounting Holes  
\*Available in T-Pattern



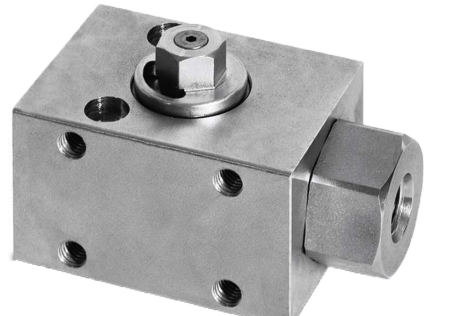
**BV3B Series**  
Material: Carbon Steel / SS316  
Thread Type Available: NPT, SAE, BSP  
Working Pressure: 5,075 PSI  
Standard Seals: Nitrile  
\*Full Port



**BV3-ES Series**  
Material: Carbon Steel  
Thread Type Available: NPT, SAE  
Working Pressure: 5,075 - 5,800 PSI  
Standard Seals: Nitrile



**BV2-MINI Series**  
Material: Carbon Steel  
Thread Type Available: NPT, SAE, BSP  
Working Pressure: 7,250 PSI  
Standard Seals: Nitrile



**BV2-ES Series**  
Material: Carbon Steel  
Thread Type Available: NPT, SAE  
Working Pressure: 7,250 PSI  
Standard Seals: Nitrile



**BV2-GRS3/GRS6 Series**  
Material: Carbon Steel / SS316  
Thread Type Available: Pancake Style  
Working Pressure: 3,000 & 6,000 PSI  
Standard Seals: Nitrile

### Low Pressure Brass Ball Valves

- BBV Brass Ball Valves, 600 WOG, Full Port, Nickel Finish / 1/4" to 4"
- MBBV Brass 1/4" turn Ball Valves, 450 PSI, Nickel Finish

### Low Pressure Steel Ball Valves

- SBV Steel Ball Valves, 2,000 PSI, Full Port / 1/4" to 2"
- SSBV 316SS Ball Valves, 1,000 PSI, Full Port / 1/4" to 4"
- SSBV 316SS Ball Valves, 2,000 PSI, Full Port / 1/4" to 3"

