

Waterblast & Grease Injection Hose Market Edition



DNP Americas
860 FM 517
Alvin, TX 77511
Office: 281-388-0253
Fax: 281-388-1902
www.dnpamericas.com





CRS Series

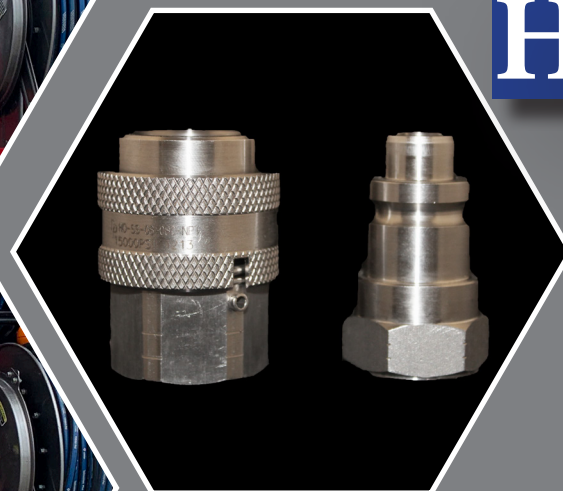
- Un-valved design
- Screw-type
- 316 Stainless Steel
- PSI 10,000/15,000/20,000
- Sizes: 1/2", 3/4", 1"



UHP Series

Needle Valves, Ball Valves,
Check Valves, Adapters

- 316 Stainless Steel options
- PSI ranges 10,000 - 60,000



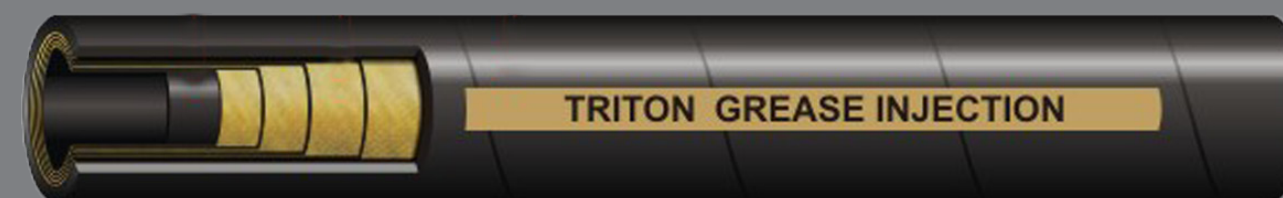
HO Series

- Un-valved design
- Screw-type
- 316 Stainless Steel
- 15,000 or 20,000 PSI
- Size 1/2" only



Waterblast Hose

- New style is more compact with better bend radius (smaller OD)
- Oil resistant, synthetic rubber
- Multiple Spiral Technology
- Termination: WB series, interlock, external/internal skive, 2-piece fittings
- NPT and Type M connections - available in carbon steel or stainless steel
- Hose lengths are custom made to what is needed
- Sizes: 3/8" with 18,000 PSI and 1/2" with 15,000 PSI



Grease Injection Hose

- New style is more compact with better bend radius (smaller OD)
- Oil resistant, synthetic rubber
- Multiple Spiral Technology
- Termination: GI series, interlock, external/internal skive, 2-piece fittings
- Used in wireline market for grease injection services. Hose cover must be pin pricked when being used with sour gas
- NPT and Type M connections - available in carbon steel or stainless steel
- Hose lengths are custom made to what is needed
- Sizes: 1/2" with 15,000 PSI

DNP Americas offers programs for customers to help achieve their own company growth. Please contact us for more information.

Hose Assembly Program

Bulk Hose Program